

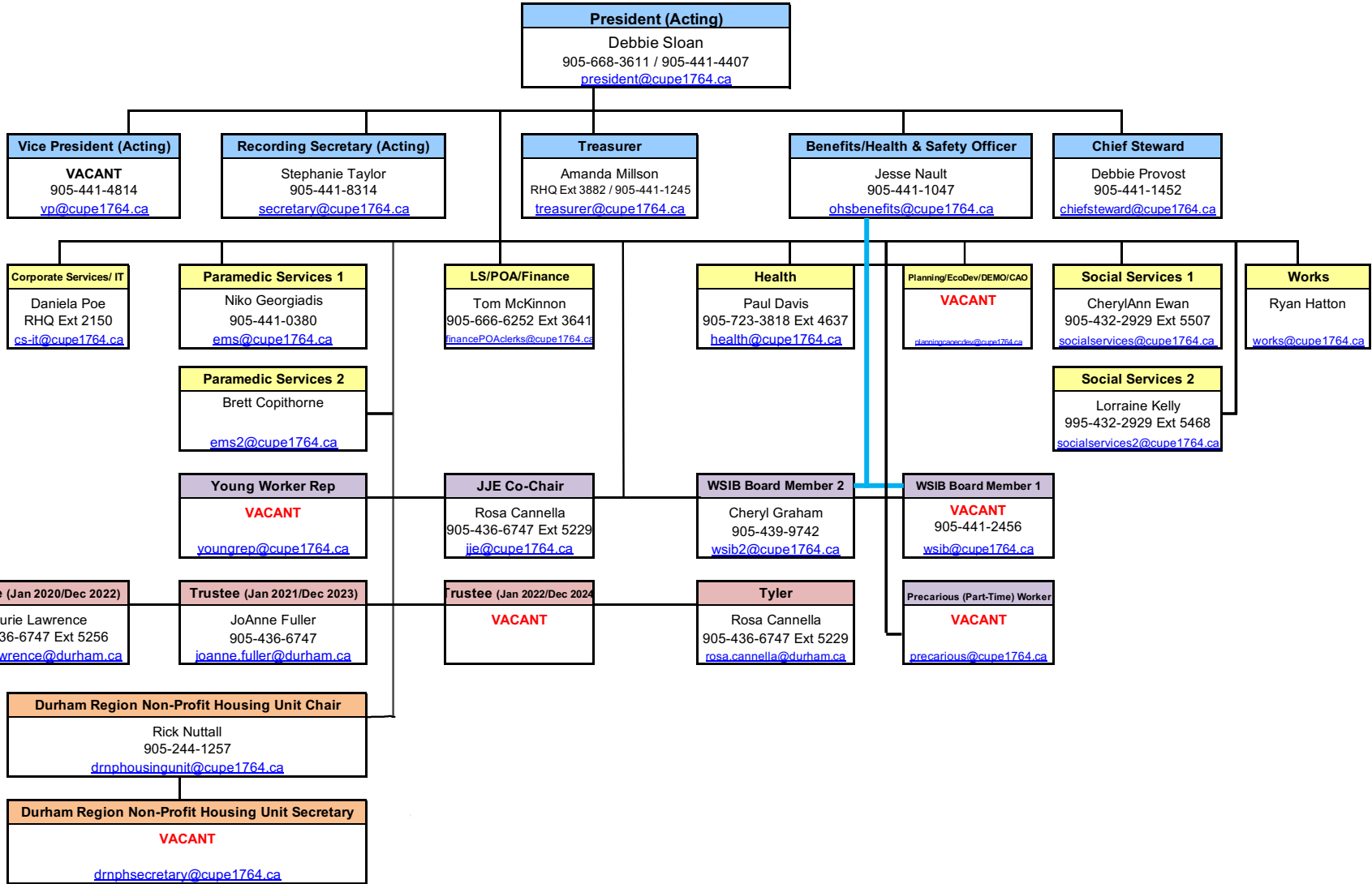


**CUPE LOCAL 1764
ORGANIZATION CHART 2022**

Table Officers

Executive Board Members

Local Sub-Unit



Regional Headquarters (RHQ): 905-668-4113

CUPE LOCAL 1764 UNION OFFICE

Address: 11 Stanley Court, Unit 9
Whitby ON L1N 8P9

Phone: 905-668-3611 or 1-866-305-1764
Fax: 905-668-0119

Email: President: president@cupe1764.ca
Union Office: admin@cupe1764.ca
IT Support: support@cupe1764.ca
Administrative Staff: Mary Guttman & Dan Jones